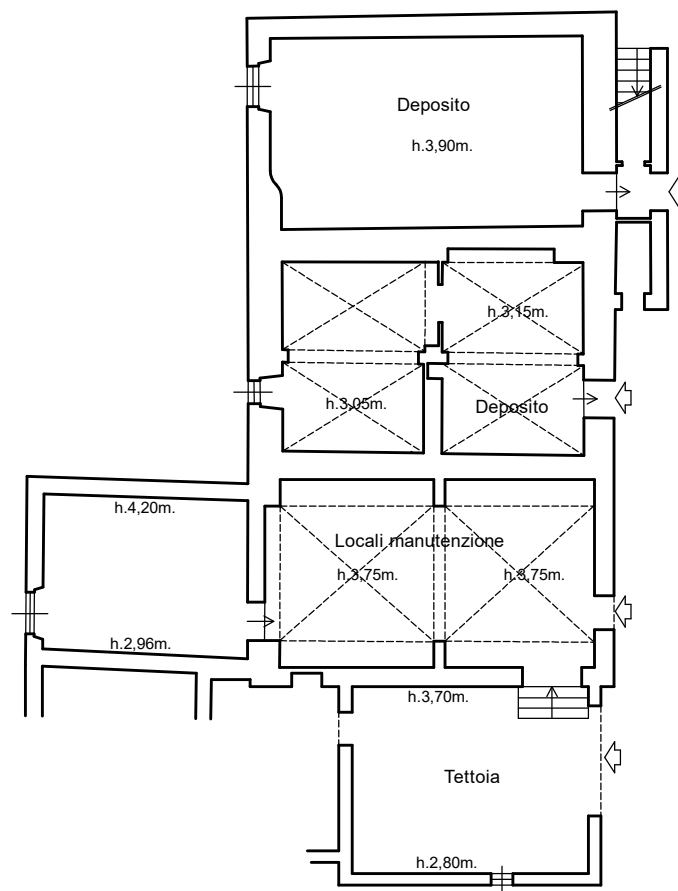


Edificio n. 3 COMUNE DI CASTELLINA IN CHIANTI Pod. Busona

DATI CATASTALI: Fg. 105 P.IIIa 137 sub. 4 – Cat. D/10

sup. mq. 79,15 – vol. mc. 278,48



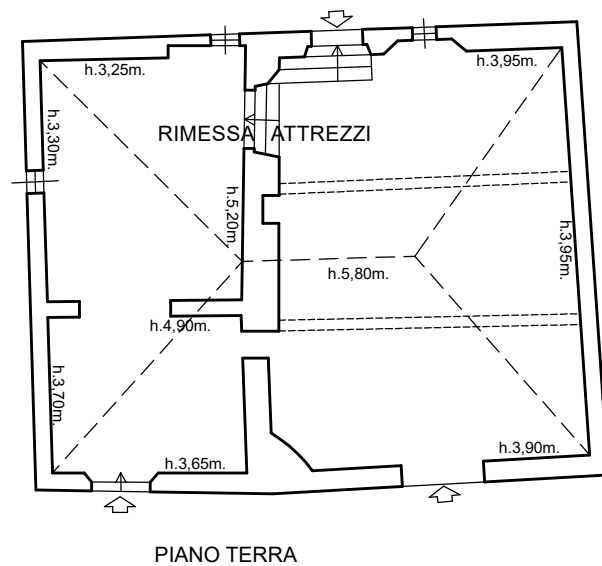
PIANO TERRA

Scala 1:200



Edificio n. 2 COMUNE DI CASTELLINA IN CHIANTI Pod. Busona

DATI CATASTALI: Fg. 105 P.IIa 137 sub. 5 – Cat. D/10
sup. mq. 142,83 – vol. mc. 658,88

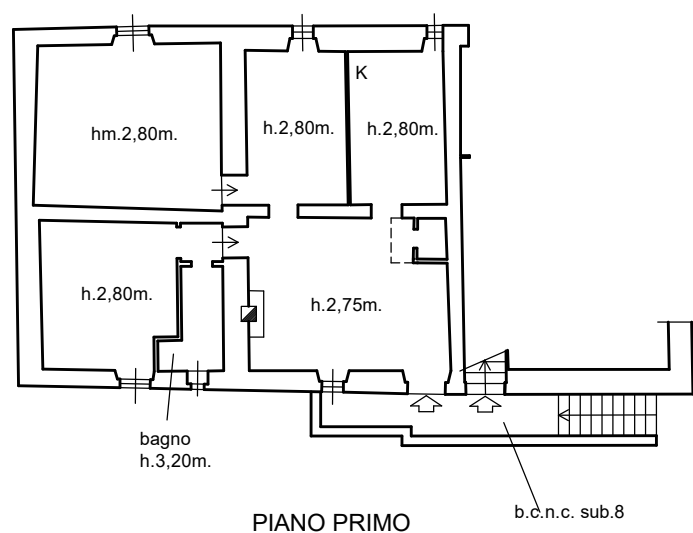


Scala 1:200



Edificio n. 3 COMUNE DI CASTELLINA IN CHIANTI Pod. Busona

DATI CATASTALI: Fg. 105 P.III 137 sub. 6 – Cat. A/3 – Classe U – cons. 6 vani
sup. mq. 83,05 – vol. mc. 230,46

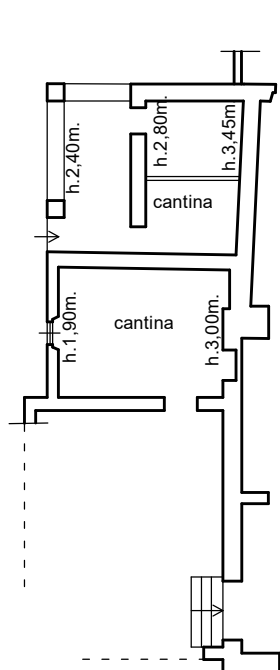


Scala 1:200

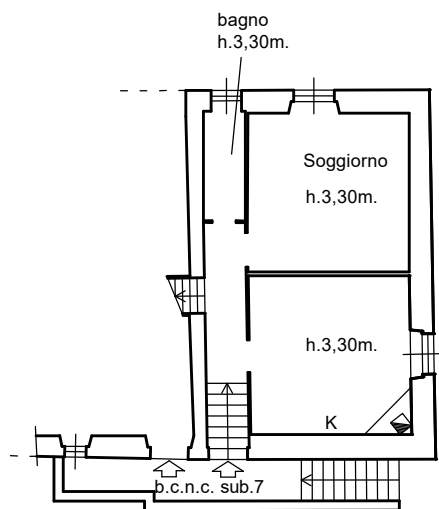


Edificio n. 3 COMUNE DI CASTELLINA IN CHIANTI Pod. Busona

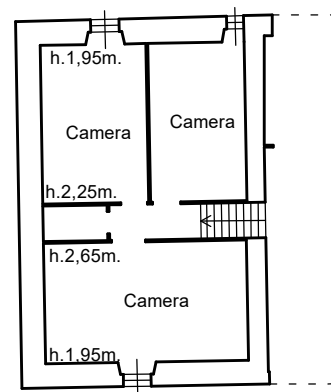
DATI CATASTALI: Fg. 105 P.IIIa 137 sub. 7 – Cat. A/3 – Classe U – cons. 7 vani
sup. mq. 124,42 – vol. mc. 345,74



PIANO TERRA



PIANO PRIMO



PIANO SECONDO

Scala 1:200

