

Geometra  
Gabriele Giustarini

Loc. San Martino - via della Repubblica n. 13  
53035 Monteriggioni Siena

P.IVA 00781960521   c.f. GST GRL 67H27 1726Q  
tel 0577 589678  
cell 348 2609091  
e-mail: gabrielegiustarini@virgilio.it

Software: ProgeCAD   2016

Versione 7.2 [16.0.10.14]

Comuni di: CASTELLINA IN CHIANTI   e   MONTERIGGIONI

Proprietà: Sig.ra GIULIA GROPALLO

Progetto: PAPMAA per interventi da effettuarsi nell'azienda agricola

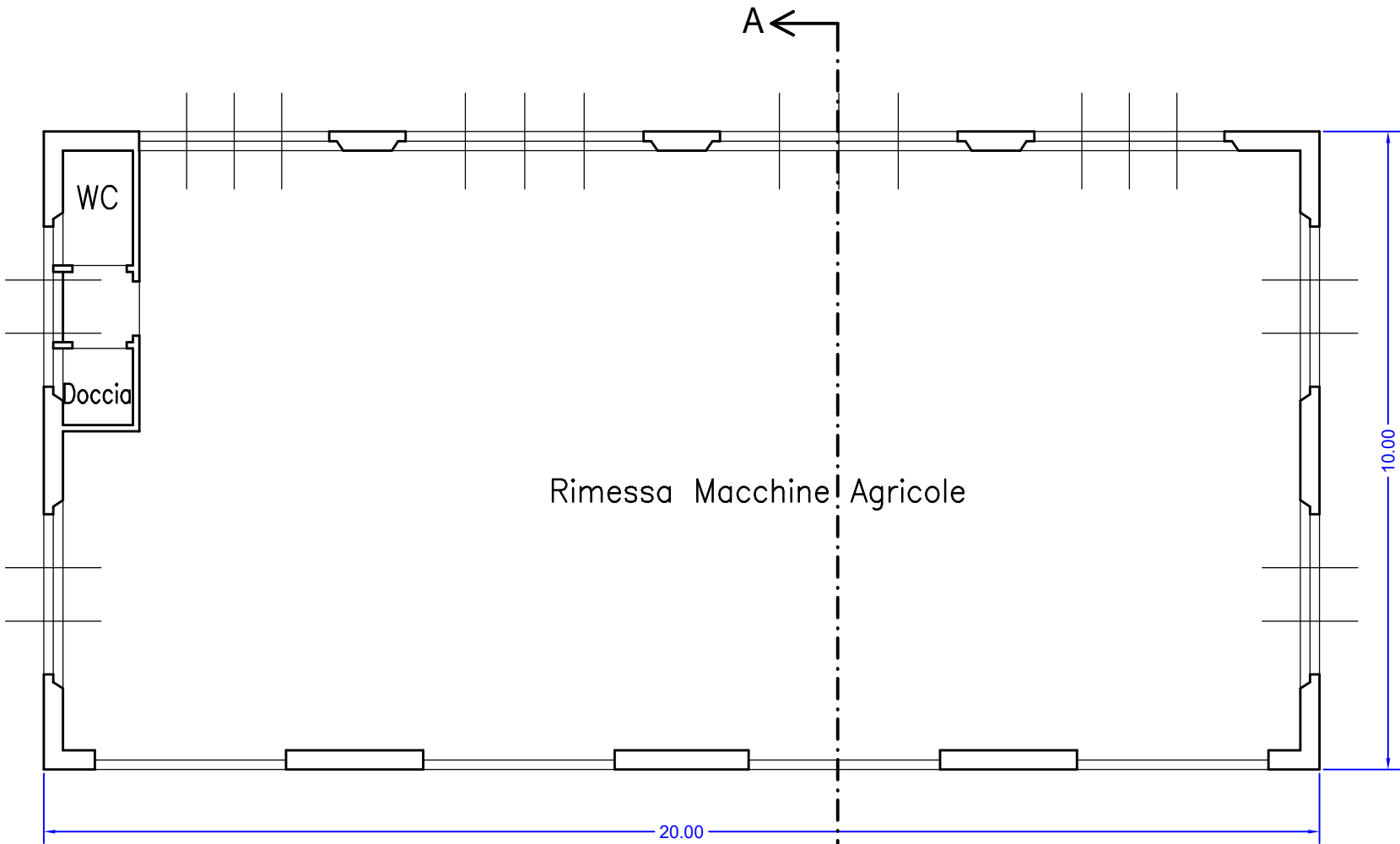
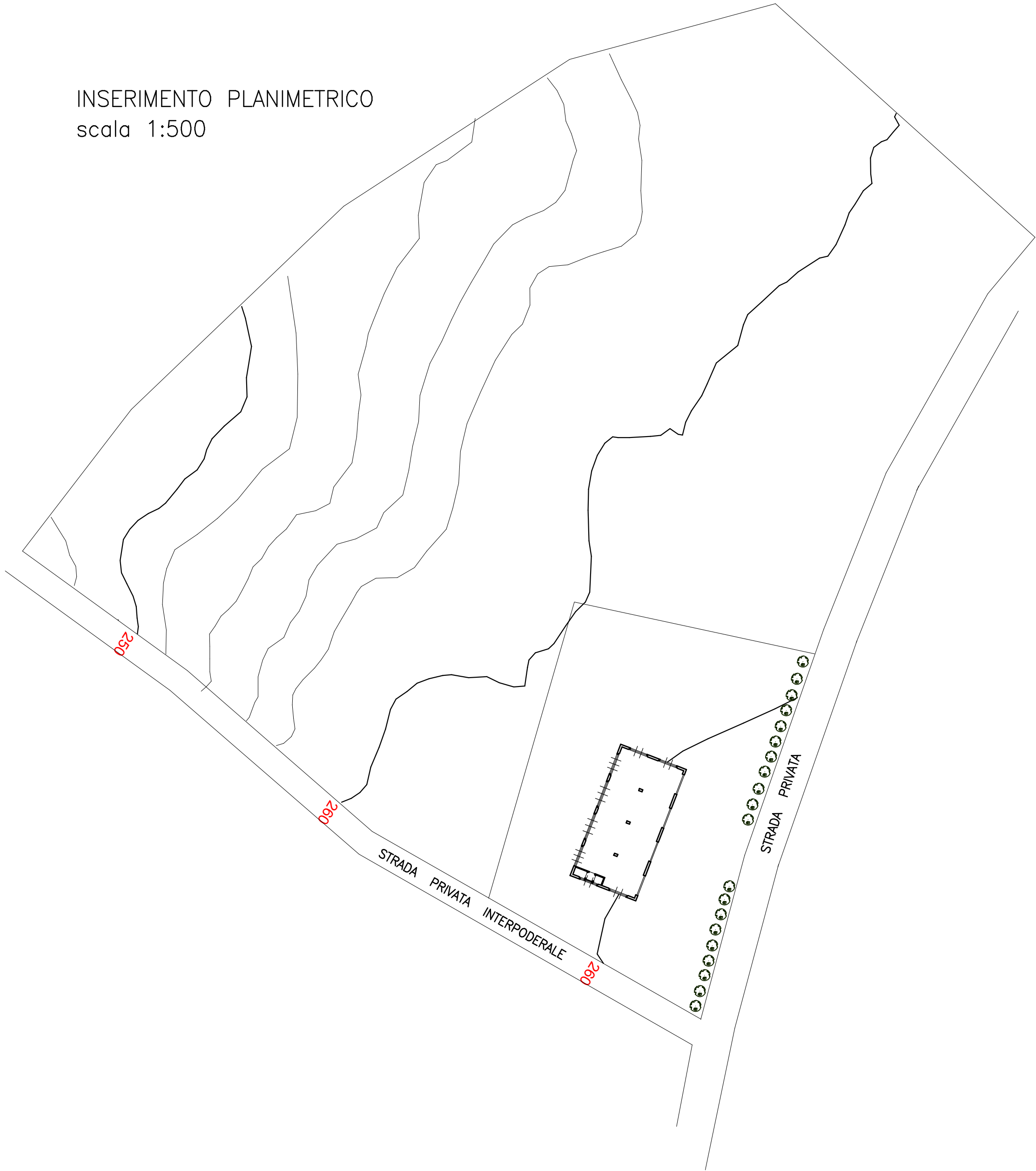
Sommario: Progetto di massima rimessa macchine  
Terza Soluzione art. 13.14 PTCP

scala grafica: 1:100

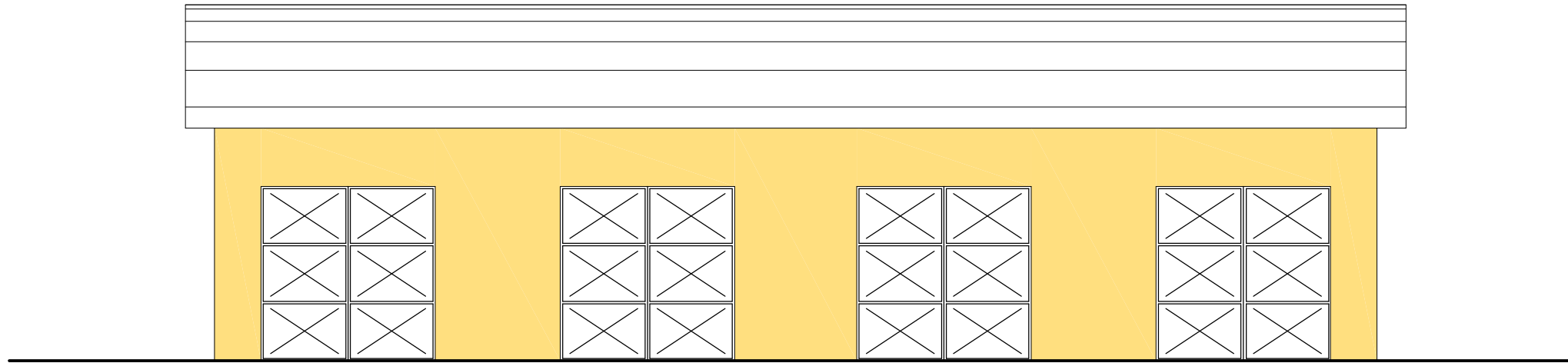
Note:

Monteriggioni,   Gennaio   2022

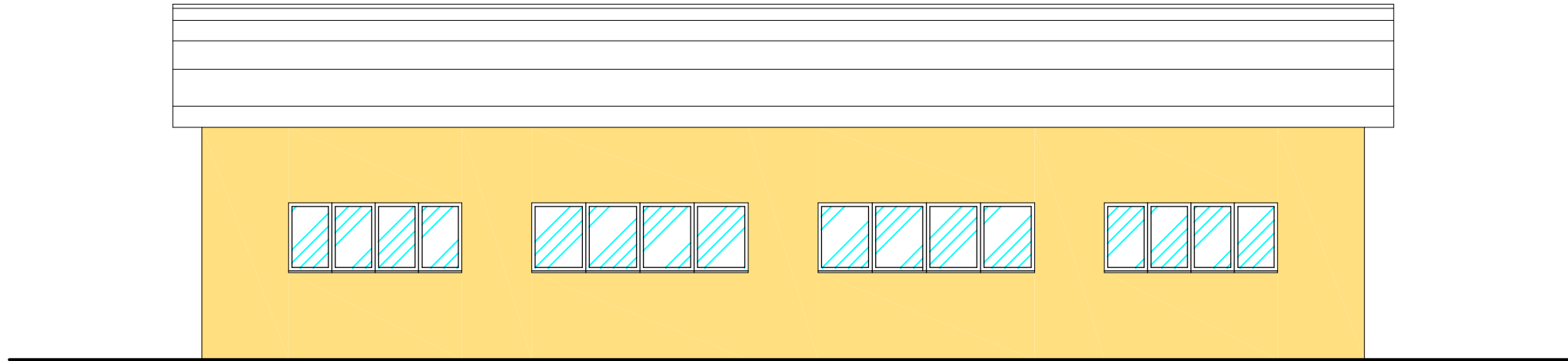
INSERIMENTO PLANIMETRICO  
scala 1:500



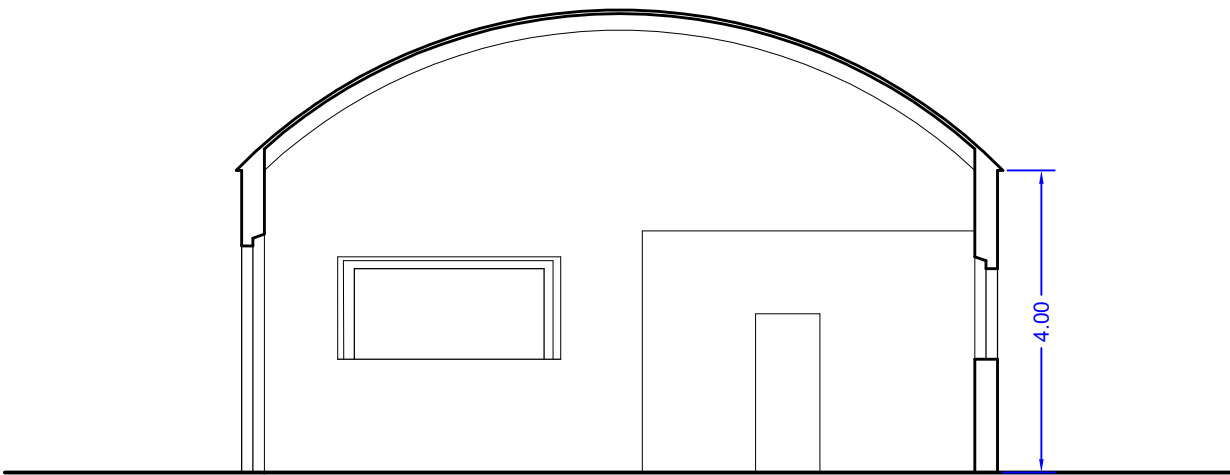
PIANTA



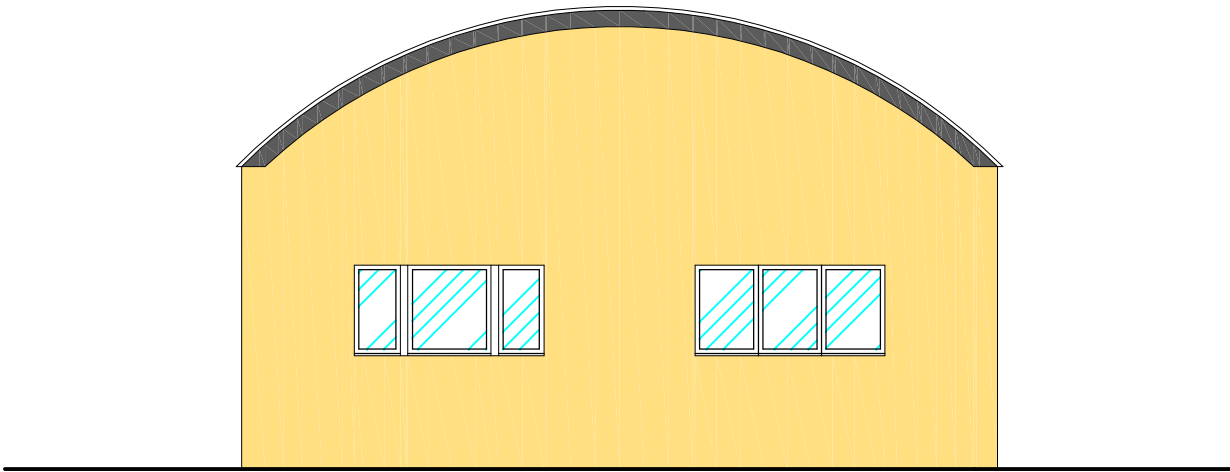
FRONTE STRADA



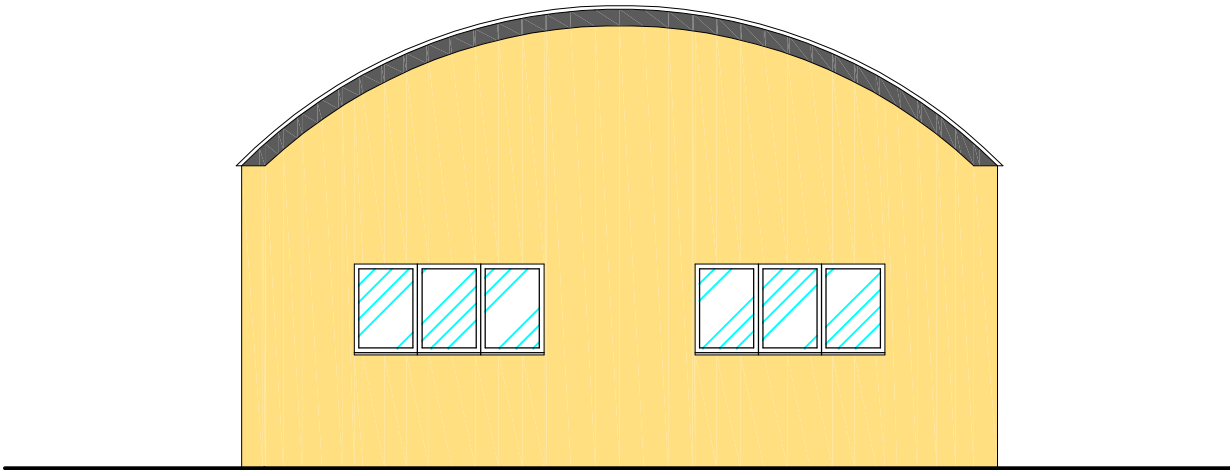
RETRO



SEZIONE A-A



FIANCO DESTRO



FIANCO SINISTRO